



RELEASE ANNOUNCEMENT
Kaseya Mobile Device Management (KMDM)
Version 1.0

ANNOUNCEMENT DATE: FEBRUARY 15, 2011
TARGET AVAILABILITY DATE: SEPTEMBER, 2011

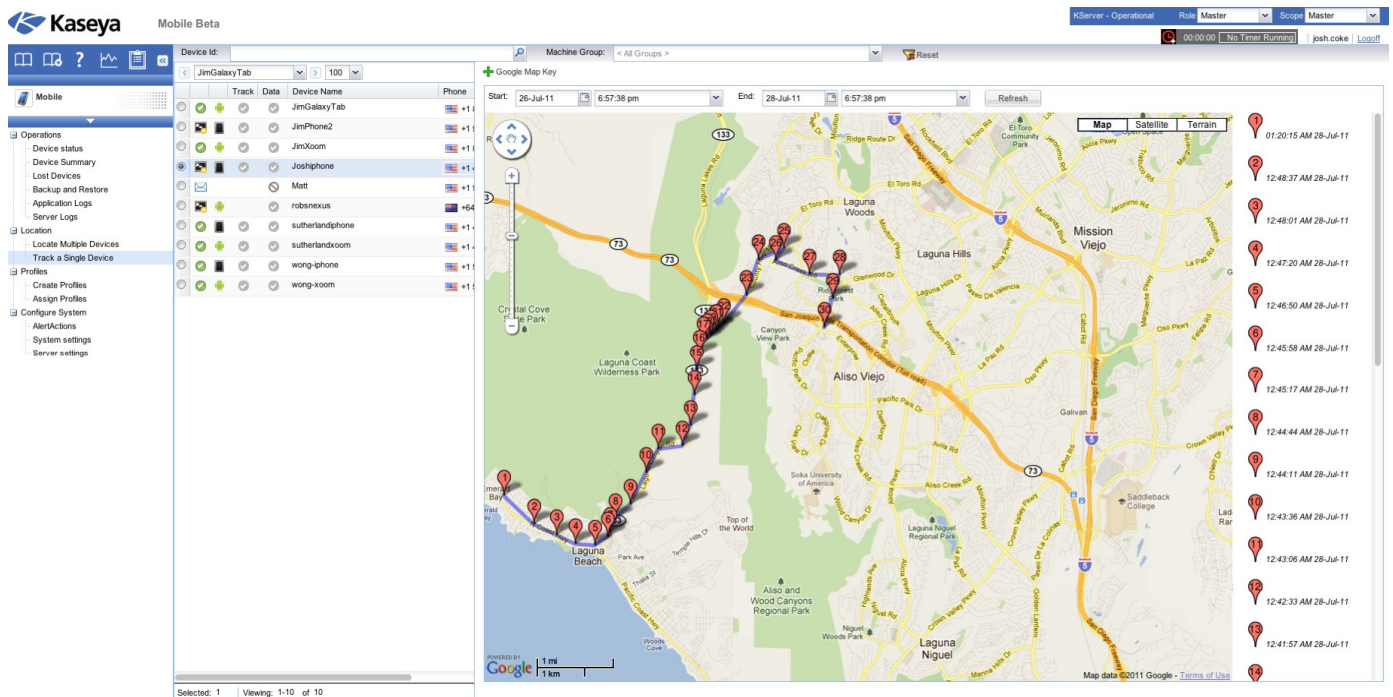
TABLE OF CONTENTS

OVERVIEW	1
FEATURES.....	2
INVENTORY.....	2
EMAIL CONFIGURATION.....	2
BACKUP AND RESTORE.....	2
GEO LOCATION TRACKING.....	2
LOSS OR THEFT HANDLING.....	2
SUPPORTED DEVICES	2
RELEASE LOGISTICS.....	2
BEST PRACTICES FOR SOFTWARE UPDATE	2
AVAILABILITY	3
WEB CASTS AND TRAINING.....	3
PRICING.....	3
<i>Perpetual.....</i>	<i>3</i>
<i>Subscription.....</i>	<i>3</i>
LICENSE	3
AGREEMENT	3

Kaseya Mobile Device Management

OVERVIEW

With mobile handheld technologies becoming the norm for business professionals across all industry segments, IT professionals are faced with the growing need to track and manage these devices in the same manner as they manage desktops and servers today. The Kaseya IT Systems Management integrated framework is the ideal platform to extend that management to the mobile device. Some of the key options will include inventory, configuration, backup and location tracking. Kaseya Mobile Management will include natively written applications with support for iPhone, iPad and Android.





FEATURES

INVENTORY

Audit and Inventory is a core benefit of Kaseya's IT Automation Framework and with the inclusion of mobile management, IT professionals will now have an even wider view of remote managed devices. Complete hardware and application visibility will be provided.

- Single integrated UI for viewing and searching inventory
- Detailed device information available for drill-down
- Detailed application information available for drill-down
- Updated device information on request
- Convenient management reports

EMAIL CONFIGURATION

Email configuration will allow administrators to standardize and automate the deployment of connectivity settings required for email, calendar and contacts and thus ease the support burden on the IT organization.

BACKUP AND RESTORE

Business continuity plays a vital role across any enterprise to ensure minimum downtime and maximum productivity. Beyond email and contacts, mobile device users are leveraging notes, images and other user data as part of their daily business practice. Mobile Management includes the ability to remotely backup key user data to a central repository with automated restore options.

- Backing up contacts
- Restoring contact data

GEO LOCATION TRACKING

A key benefit to managing mobile devices is the ability to leverage the GEO positioning capabilities inherent within the device. Whether locating due to theft or loss or to navigating the user to the nearest mobile

support center, GEO Location Tracking provides administrators the ability to act proactively on behalf of their mobile users.

- Historical device location tracking
- On demand location query
- Map-based interface

LOSS OR THEFT HANDLING

Loss or theft of mobile devices is a common issue across the entire spectrum of users. Waiting for someone to answer the phone in the hope of it being returned may not be an option. In addition, critical business information may be compromised as a result of the loss. Mobile Management has the unique ability to perform a series of operations to ensure maximum data protection while also providing the ability to locate and retrieve.

- Detect new SIM card
- Erase user data
- Report phone location
- Sound alarm tone
- Make phone unusable (lock phone)

SUPPORTED DEVICES

The initial release of Mobile Management will support the following Mobile Device Operating Systems:

- iPhone & iPad
- Android Phone and Tablet

RELEASE LOGISTICS

Best Practices for Software Update

We know that Kaseya is a mission critical application within your organization. As such, proper planning and process is necessary for upgrades or changes to these systems. Failure to plan properly and follow a change management process will yield less than desirable results.



Availability

Controlled Release Target August 2011

On-Premises Target Availability – September, 2011

On-Demand Availability – On or before 45 days of on-premises availability

On-Premises Requirement

Kaseya 2 version 6.2 or higher. Customers moving from older versions of Kaseya including version 5, should plan accordingly. This would include a review of current system requirements in addition to running in a controlled environment prior to upgrading their production server.

On-Demand Requirement

Version 6.2 or higher

Web Casts and Training

Q3-Q4 2011– Overview and Training

Pricing

Perpetual

- To Be Announced at Release

Subscription

- To Be Announced at Release

License

Kaseya Mobile Management is sold as an add-on module for Perpetual and subscription licensing.

AGREEMENT

The purchase and use of all Software and Services is subject to the Agreement as defined in Kaseya's "Click-Accept" Software and Service Terms and Conditions and the applicable EULA as updated from time to time by Kaseya at <http://www.kaseya.com/legal.aspx>. If Customer does not agree with the Agreement, please do not install, use or purchase any Software and Services from Kaseya